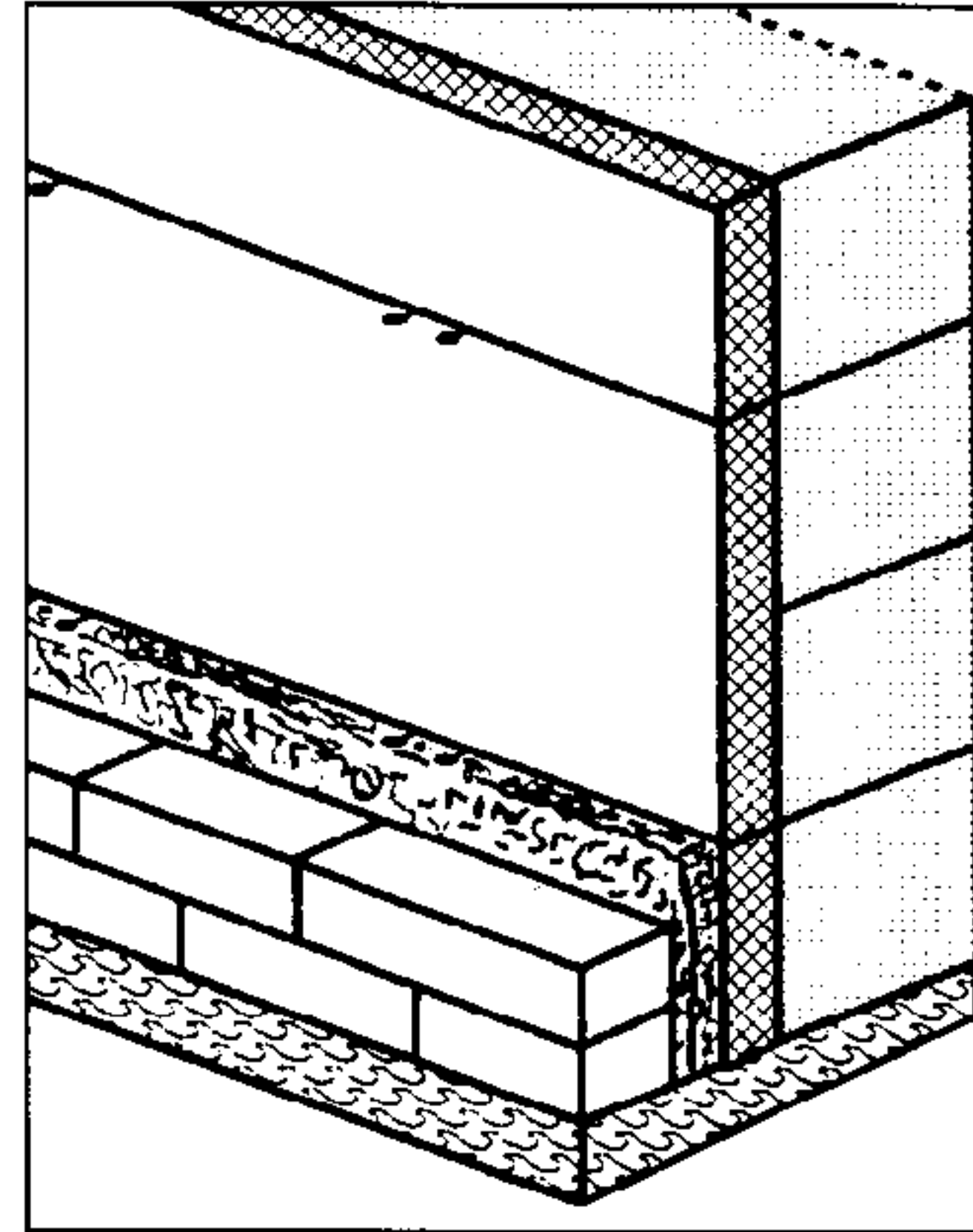


Storage - CavClear[®] products must be properly stored. Store materials in clean, dry sheltered area, off ground, until used.

Step 1 - Flashing Level

1. Install first one or two courses of the exterior wythe. Allow mortar to set and cure as required to remove projecting mortar.
2. Remove mortar and debris from cavity spaces, wall ties, flashings, and reinforcing.
3. Remove all mortar droppings and protrusions from the face of the concrete masonry to ensure direct and flush contact between the structural wythe and insulation (if applicable).
4. If the first set of ties are located at 8", place 8"x96" sheets of CavClear Masonry Mat horizontally at flashing level. Otherwise, place 16"x96" sheets of CavClear Masonry Mat at flashing level or cut to fit first row of ties.
5. **IMPORTANT** - If air space width permits, place two sheets of CavClear at the flashing level. Extend extra mat at least to top of base flashing or the first course of masonry ties.
6. **IMPORTANT** - Use only proper amount of mortar in all joints. Completely fill all joints in accordance with specifications.

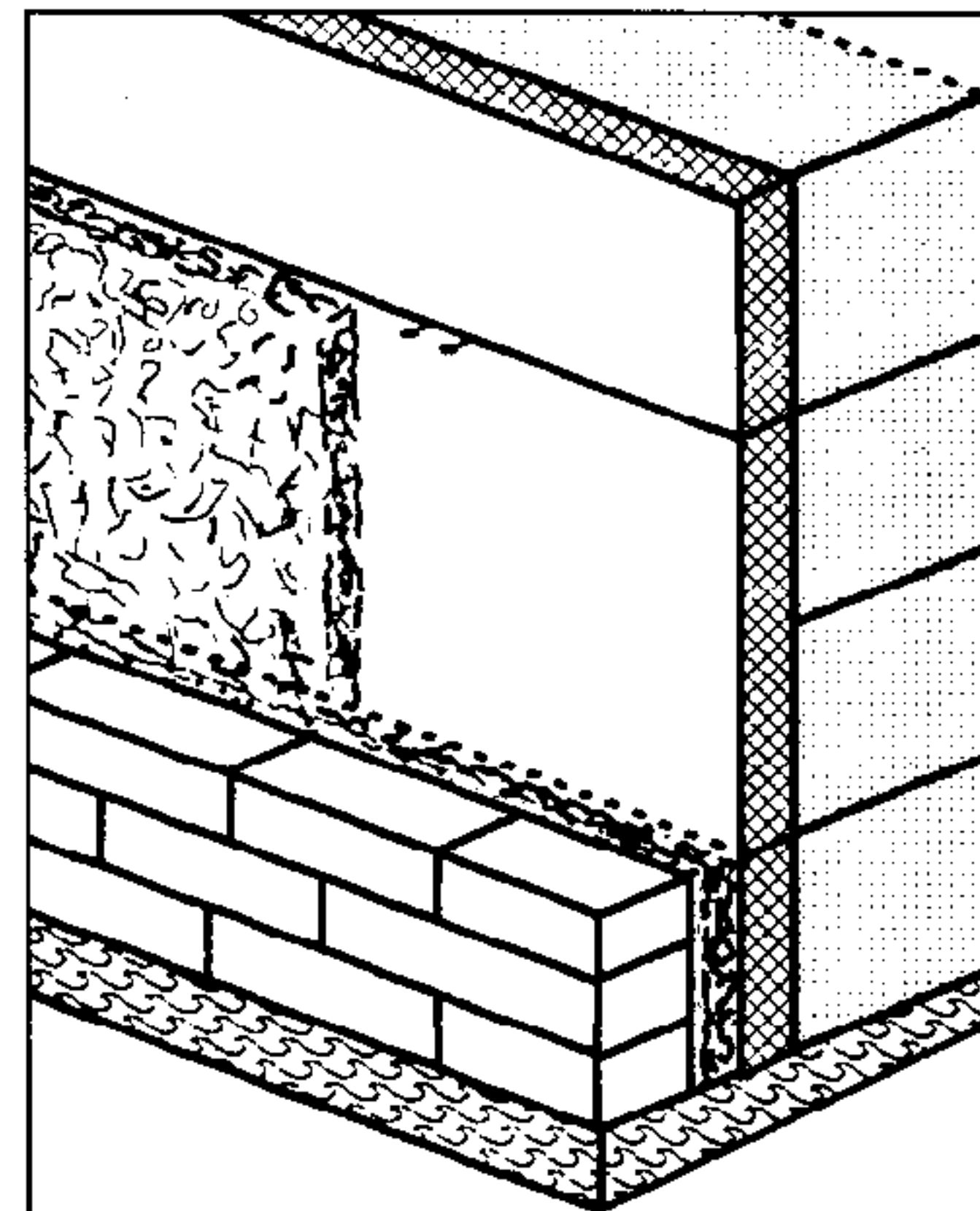


Do not construct exterior wythe to first set of ties until after first row of CavClear is installed.

IMPORTANT - Do not staple, nail or otherwise compress in order to secure the masonry mat to insulation or interior wythe. Follow directions herein.

Step 2 - Additional Courses

1. Prior to construction of subsequent courses, place 16"x96" sheets of CavClear Masonry Mat between wall ties.
2. If using adjustable masonry reinforcing, install tab ties or pintel ties temporarily to secure the mat. With other types of ladder reinforcing, temporarily secure CavClear with clamps, tie wire or other similar means and methods.
3. Tightly butt adjacent pieces. Do not allow gaps or voids where mortar can accumulate. Stagger end joints in adjacent rows.
4. **IMPORTANT** - If air space width permits, use multiple layers above all through-wall flashings. Extend extra masonry mat to top of flashing.
5. If any areas of the wall have a larger air space, use multiple layers of masonry mat whenever air space width permits or conditions require additional protection. See project manual and specifications for requirements.
6. CavClear will perform properly when installed substantially continuous in air space.



Install subsequent rows of CavClear prior to placing brick or block courses. Clamps or pintels may be used to hold CavClear in place while the exterior veneer courses are completed.

Repeat this process until brickwork is completed.

If you have any questions regarding the installation of CavClear or your specific project requirements, please call a CavClear representative toll-free at 888-436-2620.