

Cavity Airspace Maintenance and Drainage Material

Typical Exterior Wall using CavClear® Stone Mat (backup may also be cmu, concrete, etc.)

Product Description

Basic Use: CavClear® Stone Mat is installed full-height behind stone to create a continuous drainage area for moisture management.

A continuous drainage area behind stone is beneficial to the long-term performance of the wall. No wall is waterproof. Wind-driven rain will find its way behind stone through penetrations, hairline fractures, cement mortar, and, depending on the stone porosity, through the stone itself. Additionally, condensation can produce moisture on the backside of stone. Therefore, it is important to manage the water that will undoubtedly be part of the wall system.

Water management can be effectively achieved by providing properly designed and constructed weep holes, and by selecting the appropriate vapor barrier and flashing materials. But if moisture is unable to reach this system, it will be trapped within the wall where it can damage the wall's performance and integrity. A continuous drainage area will direct moisture to flashing and weeps, where it can exit the wall.

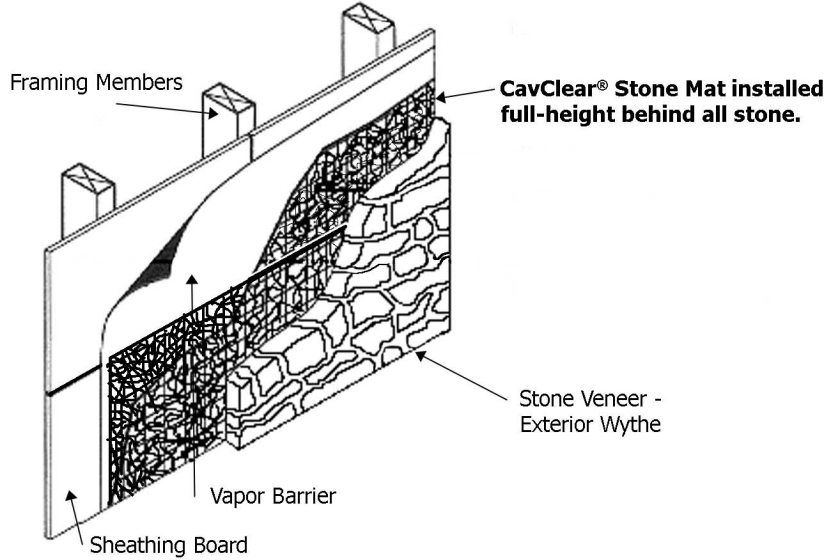
While a continuous airspace behind stone is recommended, the longstanding issue has been constructability. Professionals specializing in stone masonry will explain that it is not feasible to provide a drainage/ventilation area behind stone unless that drainage area is maintained by some material during the construction of the stone veneer.

CavClear® Stone Mat provides a continuous area that will allow water to reach the flashing and weep system.

Composition and Materials: CavClear® Stone Mat is a dense, non-woven plastic mesh made from 100% recycled material (20% minimum post-consumer content).

Sizes: 1" thick x 16" x 96"
 3/8" thick x 16" x 96"
 3/8" thick x 48" x 100"

Storage and Handling: Store in clean, dry sheltered area off the ground until used.



Features and Benefits

- Creates a drainage/ventilation area behind stone that would not otherwise be possible.
- Allows moisture within the wall to reach flashing and weep holes.
- Made from 100% recycled plastic.
- Reduces life-cycle costs by reducing the maintenance and repair costs associated with moisture damage.
- Helps reduce the threat of unwanted mold and mildew in the building exterior by managing moisture within the exterior wall system.
- Treated with an antibacterial/antifungal agent to inhibit mold and mildew within the airspace.

Installation

Preparatory Work: Field conditions should be examined by an experienced foreman or supervisor prior to installation to ensure substrate is in compliance with project documents.

Installation: Place sheets of CavClear® Stone Mat against the substrate as the stone wall is being constructed, green side facing backup and yellow side facing exterior. May be installed horizontally or vertically to best fit between ties. Do not install more Stone Mat than can be covered with stone in the same day.

If backup is wood with a vapor barrier, CavClear® Stone Mat may be stapled to backup. Minimize staples used. Use only those necessary to secure Stone Mat sufficiently for installation of stone.

If backup is CMU with ties or anchors at 16" intervals, use ties at top edge of Stone Mat to loosely secure Mat while stonework is complete. If necessary, use spots of adhesive to hold Mat, ensuring that the adhesive is compatible with the substrate material.

As stonework progresses, fill space between Stone Mat and stone with junk stone or mortar as specified.

Specification

Note to specifier - Specify the 1" thick CavClear® Stone Mat in projects using large stone or stone of varying dimensions. The 3/8" CavClear® Stone Mat is typically used on residential projects using smaller stone or stone cut to uniform dimensions.

2.1 STONE MAT DRAINAGE AIRSPACE MATERIAL
 A. Manufacturer and Type: CavClear® Stone Mat by Archovations, Inc. (888) 436-2620.

1. Description: Full-Height Drainage Mat for Stone Masonry. The stone mat shall be specifically designed for stone masonry to create a continuous drainage space behind stone masonry. The stone mat shall be fluid conducting, non-absorbent, mold and mildew resistant polymer mesh consisting of 100% recycled plastic with binder. Stone mat is to be a non-woven textile product in random pattern and have voids no greater than 1/8" in diameter.

2. Thickness and Size:
 [1 inch x 16 inch x 8 foot]
 [3/8 inch x 16 inch x 8 foot]
 [3/8 inch x 48 inch x 100 foot]

3.1 INSTALLATION

- A. Install stone mat continuously behind the full-height of all exterior stone during construction of exterior wythe; follow manufacturer's installation instructions. Install pieces horizontally. Stagger end joints in adjacent rows. Cut to accommodate other building components when necessary. Use multiple layers at bottom of wall and above through-wall flashings to ensure moisture reaches weeps. Fit to perimeter construction and penetrations without voids.

CavClear®/Archovations, Inc.
www.cavclear.com
888-436-2620